

GPS USB driver installation guide

For Windows2000 and WindowsXP, follow the steps below to install driver.

1. Run **PL-2303Driver_[...].exe**

2. If you've installed an old version driver, then the following picture may appear. Press **“Re-install (Upgrade)”**!



3. If there appears window below, press **“Continue Anyway”**.



4. Press **“Finish”**.



For Windows XP, further steps are needed.

5. Plug-in GPS receiver.(If you've plugged it, unplug and then re-plug.)

6. There will come out a "Found New Hardware" window as below.

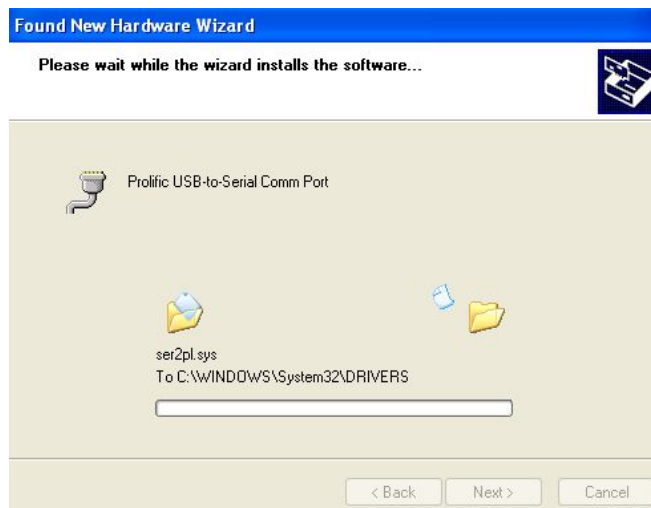
Select "**Install the software automatically**" and press "**Next**".



7. Press "**Continue Anyway**" after the window below appears.



8. You will see the OS is copying the driver.



9. Press “**Finish**”.



Till now, the GPS USB driver has been installed successfully. You can check it by Device Manager as shown below.



For Windows XP, plugging PGM-111 into different USB ports needs to repeat steps 5 ~9.

If you failed in installation, you can remove every possible GPS USB driver installed before by running **PL-2303-Driver_[...].exe** and select “**Uninstall driver!**”. After re-start computer, repeat installation procedures as described above.